

# NEARLY 50 YEARS OF EXPERTISE ENGINEERED INTO EVERY PRODUCT WE MAKE.

Since 1970, the framing, museum, and design communities have trusted Tru Vue® glass and acrylic solutions to protect and display cultural heritage objects and fine works of art. Our exceptional glazing combines unrivaled aesthetics with unmatched performance to meet the most stringent conservation standards and exceed the highest expectations.

## CONTENTS

- 2 SELECT PROJECTS THE WORLD OVER
- 4 OPTIUM MUSEUM ACRYLIC®
- 6 ULTRAVUE® LAMINATED GLASS
- 8 CONSERVATION GRADE UV ACRYLIC AND GLASS
- 9 ULTRAVUE® UV70 AND UV92 GLASS
- 10 TRULIFE® ACRYLIC
- 12 TRU VUE® ACRYLIC AND GLASS SOLUTIONS | TRU VUE® RESOURCES

# PROTECTION AND PRESERVATION TRUSTED THE WORLD OVER.

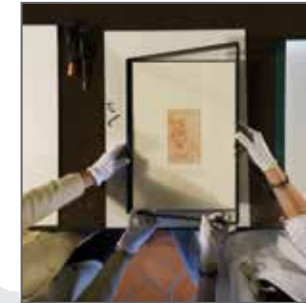
Tru Vue glass and acrylic solutions are known around the world for uncompromising protection and for creating a better visual experience. Our fine glazing products are available for purchase through our global network of authorized distributors.



## MR. MORGAN'S LIBRARY (EAST ROOM)

**MEDIUM:** Bookcases  
**LOCATION:** The Morgan Library & Museum  
 New York, NY, USA

**GLAZING:** Optium Museum Acrylic®  
 Mr. Morgan's Library (East Room). After restoration. © The Morgan Library & Museum.  
 Photography by Graham S. Haber



## STUDY OF AN OLD MAN (L'UOMO DELLA BIETTA), C. 1480 LEONARDO DA VINCI

**MEDIUM:** "Sanguigna" Chalk on paper  
**LOCATION:** Istituto Nazionale per Grafica, Rome, Italy  
**GLAZING:** Optium Museum Acrylic®

Climate controlled frame case design by the company Ivano Francavilla, [www.ivanofrancavilla.it](http://www.ivanofrancavilla.it)



EXHIBITION: Nov. 21, 2012 - Feb. 8, 2013

## 10 SECONDS, 12\_15\_2010, 3:29PM TO 3:42 PM PST, 34.1666301-11.033714, 2010 JOHN DIVOLA

**MEDIUM:** Pigment Print  
**LOCATION:** Los Angeles County Museum of Art,  
 Los Angeles, California  
**GLAZING:** Optium Museum Acrylic®



EXHIBITION: Nov. 21, 2012 - March 2013

## LOMOS DE LA CIUDADELA PEDRO TORRES

**MEDIUM:** Large Format Photography  
**LOCATION:** Biblioteca de México "José Vasconcelos",  
 Mexico City, Mexico

**GLAZING:** Optium Museum Acrylic®  
 Framed: Lavinia's Arte en Marcos, [laviniasartframes.com](http://laviniasartframes.com)



EXHIBITION: March 31, 2017 - Sept. 3, 2017

## THE TOMB: ANCIENT EGYPTIAN BURIAL

**MEDIUM:** Papyri  
**LOCATION:** National Museums Scotland  
 Edinburgh, United Kingdom

**GLAZING:** Optium Museum Acrylic®  
 Funerary papyri on display in The Tomb exhibition. © National Museums Scotland



EXHIBITION: Nov. 21, 2012 - Feb. 8, 2013

## PICTURES OF MAGAZINES 2 VIK MUNIZ

**MEDIUM:** Photography  
**LOCATION:** Ben Brown Fine Arts  
 Hong Kong

**GLAZING:** Optium Museum Acrylic®  
 Courtesy of the artist and Ben Brown Fine Arts,  
 Hong Kong.

# THE BEST VIEWING EXPERIENCE IS MADE POSSIBLE WITH OPTIUM.®



Installation view of Torild Stray, *New York Metamorphosis*, charcoal on paper, National September 11 Memorial & Museum, New York, New York, United States of America. Courtesy of 9/11 Memorial & Museum. Photo by Jin Sup-Lee, 9/11 Memorial. Seamed Optium Museum Acrylic® in traditional frame.

Optium Museum Acrylic® is among the most innovative glazing products in the world. It features a virtually invisible double-sided, anti-reflective, anti-static coating that provides conservation-grade UV protection (99%), making it ideal for delicate pastels, fragile surfaces, paper and textiles. These innovative attributes combine to deliver a stunning, crystal-clear, high-definition viewing experience unlike any other. Optium Museum Acrylic is designed to meet the most uncompromising aesthetic and preservation standards.



## FEATURES

- Reduces distracting reflections for a close, intimate experience
- Blocks up to 99% of UV rays (300-380nm)
- Optimal light transmission
- Anti-static protection exceeds glass and immediately dissipates static
- Durable hard coat protects against scratches associated with frequent cleaning, handling, and public interaction
- Shatter resistance safeguards against injury and damage to artwork
- Easy to clean with common household glass cleaners, no special acrylic cleaners needed
- Proprietary coating is engineered for permanence
- Can be re-used – is more sustainable than regular acrylic

## MEETS/EXCEEDS INDUSTRY STANDARDS

- Oddy Test - Passed
- Photographic Activity Test (ISO 18916) - Passed
- Corrosion Resistance (ASTM B117-03) - Passed
- Electrical Surface Resistivity (ASTM D257) < 1.0E+12 Ohms/square
- Static Decay = 0.01 Seconds
- Meets Swinging Punch Bag ANSI Z97.1-2009 Class A & CPSC Category II rating (48 inch impactor drop height)
- Accelerated Aging - anti-reflective, anti-static, UV protection, and light transmission remain unchanged after 2000 hours (estimated to be approximately 100 years)

## RECOMMENDED APPLICATIONS

- Framing or display cases for cultural heritage and fine art collections
- Friable media (pastels, charcoal, diamond dust), fragile surfaces (burnt paper), lightweight papers, textiles, or other instances when an anti-static glazing is needed
- Exceptional abrasion-resistance for works that travel or are displayed in high traffic areas and public event spaces
- UV Protection for light-sensitive objects
- Structurally sensitive frames and/or when glass is too heavy
- Security, or when breakage is a concern and glass is not an option

THICKNESS	MAXIMUM SIZE (IN)	(MM)
3.0mm	48 x 96 in.	2438 x 1219mm
4.5mm	72 x 96 in.	2438 x 1829mm
6.0mm	72 x 120 in.	3048 x 1829mm

Available thru Tru Vue Fine Art Distributors [tru-vue.com/find-a-distributor/](http://tru-vue.com/find-a-distributor/)  
 Can be ordered cut-to-size  
 To download Facts and Specifications go to [tru-vue.com/museums-collections/samples-literature/](http://tru-vue.com/museums-collections/samples-literature/)

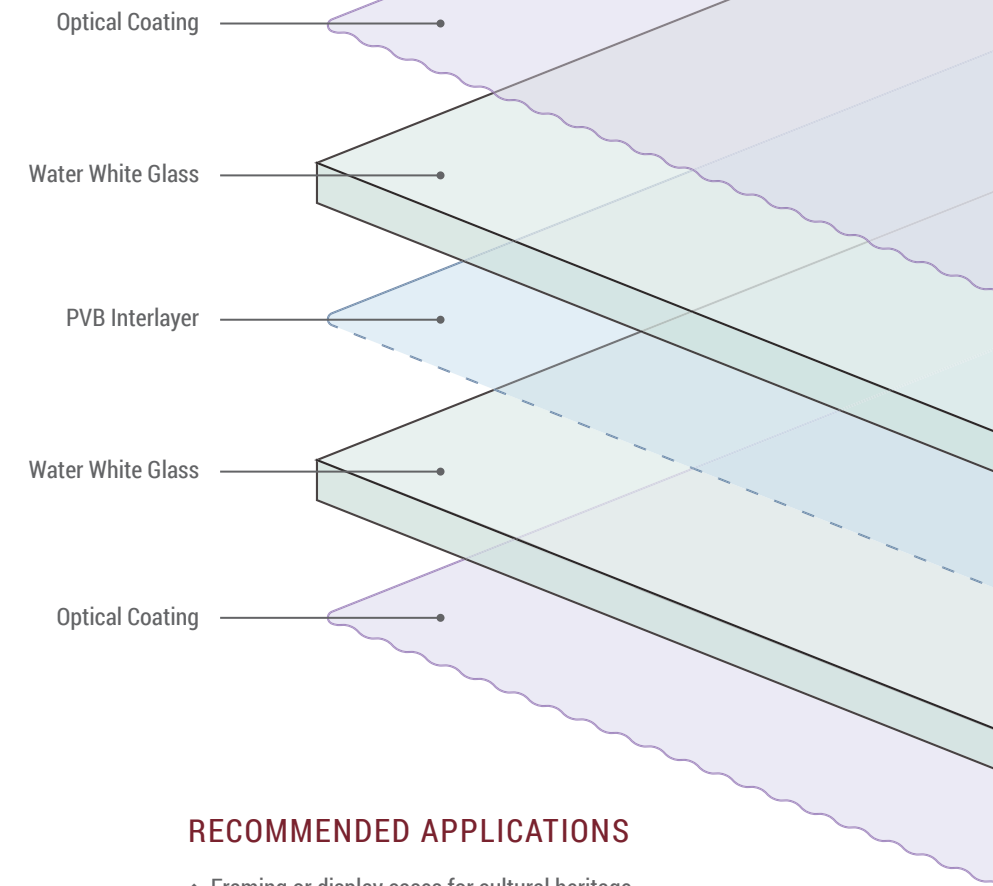


# ENGINEERED TO TIGHTER SPECIFICATIONS TO EXCEED HIGHER EXPECTATIONS.



Trophy Hall in Lobby, Glass Display Cases, The Marcus Mariota Sports Performance Center University of Oregon, Eugene, Oregon, United States of America. Kris Iverson, Moon Shadow Glass. UltraVue® Laminated Glass.

UltraVue® Laminated Glass is engineered to a tighter cosmetic specification for the most discerning clients who demand the best viewing experience possible. UltraVue Laminated Glass is shatter resistant and blocks up to 99% of harmful UV rays for ultimate protection and peace of mind. When your project demands the highest level of protection and preservation, a worldwide network of authorized Tru Vue distributors ensures UltraVue Laminated Glass is readily and widely available when you need it.



## FEATURES

- Reduces distracting reflections for a close, intimate viewing experience
- Blocks up to 99% of UV rays (300-380nm)
- Water White substrate provides crystal clear color transmission
- Optimal light transmission
- Shatter resistance safeguards against injury and damage to artwork
- Enhanced surface for better durability and easy cleaning
- Designed to meet tighter specifications for framing and display than glass made to architectural specifications
- Made in the USA and readily available through our worldwide network of authorized distributors

## MEETS/EXCEEDS INDUSTRY STANDARDS

- Oddy Test - Passed
- Photographic Activity Test (ISO 18916) - Passed
- Corrosion Resistance (ASTM B117-03) - Passed
- Meets Swinging Punch Bag Test ANSI Z97.1-2009 Class B & CPSC 16 CFR 1201 CPSC Category I rating
- Meets Pendulum Tire Drop Test EN 12600:2002
- Accelerated Aging - anti-reflective, anti-static, UV protection, and light transmission remain unchanged after 2000 hours (estimated to be approximately 100 years)

## RECOMMENDED APPLICATIONS

- Framing or display cases for cultural heritage and fine art collections
- Shadowboxes for displaying objects
- Framing for high traffic areas where safety is a concern
- Parchment, albumin, and wood panels in art collections
- When rigidity and strength are required and weight is not a concern
- When permeability of display materials is a concern
- UV protection for light sensitive objects
- Use in enclosures (display cases and sealed packages) that will be in service for long periods
- Friable items, like chalks and pastels (but anti-static coatings are even more useful in these applications)

THICKNESS	MAXIMUM SIZE (IN)	(MM)
4.4mm	63 x 85 in.	2159 x 1600mm
8.8mm	72 x 120 in.	3048 x 1829mm

Available thru Tru Vue Fine Art Distributors [tru-vue.com/find-a-distributor/](http://tru-vue.com/find-a-distributor/)  
Can be ordered cut-to-size  
To download Facts and Specifications go to [tru-vue.com/museums-collections/samples-literature/](http://tru-vue.com/museums-collections/samples-literature/)

# CONSERVATION-GRADE PEACE OF MIND.

Conservation Grade UV Acrylic solutions strike the perfect balance between color neutrality and protection. Each unique product is engineered with a crystal clear, shatterproof acrylic substrate which blocks up to 99% of harmful UV rays to help protect against fading. Tru Vue Conservation Grade UV Acrylic solutions are ideal for framing or displaying cultural heritage and fine art collections, as well as oversized and irreplaceable works of art in earthquake prone or high traffic areas where safety is a concern.

## FEATURES

	Conservation Clear® Acrylic	Conservation Reflection Control® Acrylic
99% UV PROTECTION	◆	◆
LIGHTWEIGHT	◆	◆
SHATTER RESISTANT	◆	◆
CRYSTAL CLEAR TRANSMITTED COLOR	◆	◆
MATTE-LIKE, NON-GLARE FINISH		◆

## RECOMMENDED APPLICATIONS

- UV protection (300-380 nm) for light sensitive objects
- Framing or displaying cultural heritage and fine art collections, oversized works, irreplaceable works of art
- Framing for earthquake prone or high traffic areas, and public event spaces where safety is a concern
- Works that travel

Tru Vue Conservation Grade UV Glass filters 99% of harmful UV rays, the first in the industry, to deliver unmatched protection and peace of mind. Conservation Grade UV Glass is trusted the world over for preserving significant artifacts, historical documents and friable works of art. With a wide variety of Conservation Grade UV Glass products to choose from, Tru Vue can provide a glazing solution that's right for every client, project and budget.

## FEATURES

	Museum Glass®	Conservation Clear® Glass	Conservation Reflection Control® Glass
ANTI-REFLECTIVE	◆		
99% UV PROTECTION	◆	◆	◆
LIGHT TRANSMISSION	>97%		
MATTE-LIKE, NON-GLARE FINISH			◆

## RECOMMENDED APPLICATIONS

- Reduces distracting reflections for a close, intimate viewing experience (*Applies only to Museum Glass®*)
- UV protection (300-380 nm) for light sensitive objects
- Items sensitive to uncontrolled environments

# THE CLEAR CHOICE WHEN CLARITY IS EVERYTHING.

UltraVue® UV70 and UV92 water white glass provide crystal clear color transmission and a virtually invisible, anti-reflective surface for unbelievable clarity. Ideal for items that are less sensitive to UV damage or those that will be displayed in controlled light environments where UV exposure is limited. UltraVue UV70 is available worldwide. UltraVue UV92 is available in Europe, Asia, Middle East, Africa, Oceania, and Latin America.

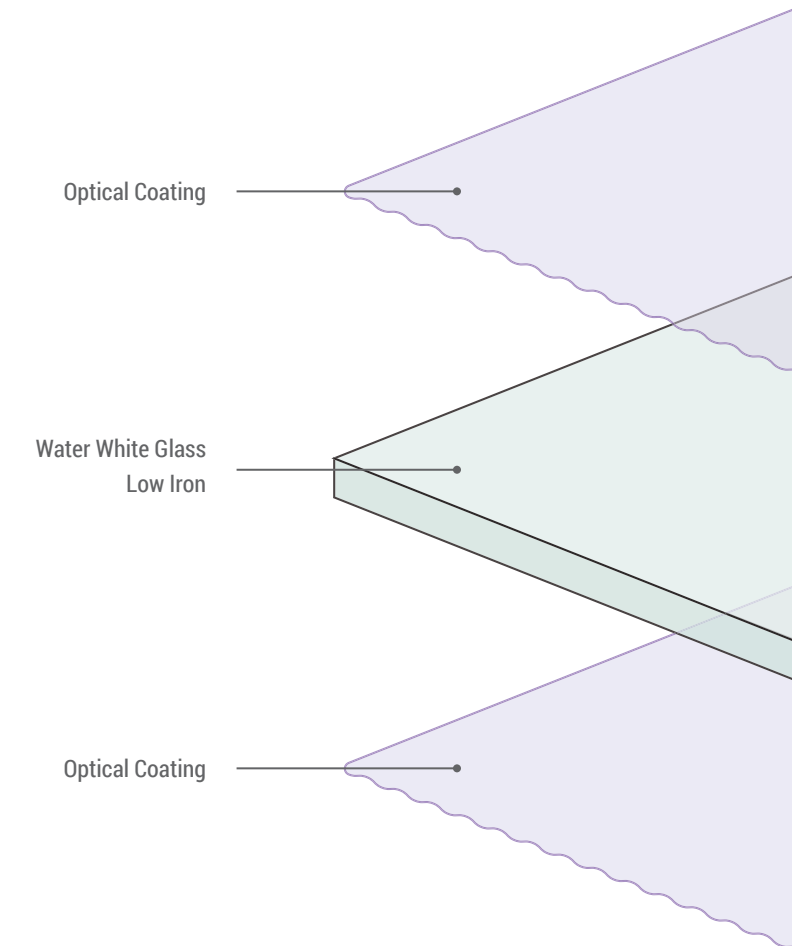
## FEATURES

- Virtually eliminates reflections
- UltraVue UV70 filters up to 70% UV/ UltraVue UV92 filters up to 92% UV (300-380 nm)
- Water White substrate provides crystal clear color transmission
- Light transmission enhances color and contrast levels
- Enhanced surface for better durability and easy cleaning
- Proprietary coating is engineered for permanence

## RECOMMENDED APPLICATIONS

- Items that are less sensitive to UV damage or that will be displayed without UV exposure
- Works of art or photography where color neutrality is most important

THICKNESS	MAXIMUM SIZE (IN)	(MM)
2.0mm	48 x 68 in.	1725 x 1220mm
3.0mm	63 x 85 in.	2160 x 1600mm





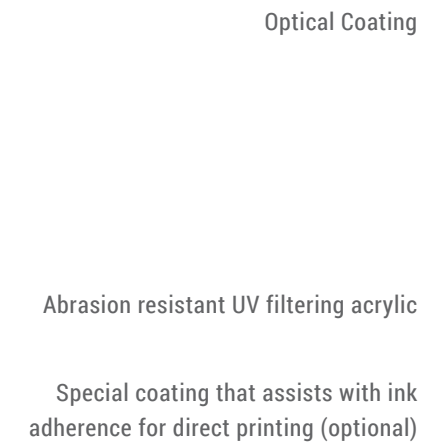
# ONE AMAZING PRODUCT. MANY APPLICATIONS.



Silicon Valley Bank Offices, Salt Lake City, Utah, United States of America. Architect and Designer: FENNIE+MEHL Architects. Photographer: Jeremy Bittermann. TruLife® Acrylic face mounted print.



Unleash your imagination. From fine art printing and corporate graphics to sophisticated interior and exhibition design, **TruLife®** single-sided, anti-reflective acrylic delivers a stunning, immersive, viewing experience. With TruLife, even the tiniest details pop with lifelike colors, incredible depth, and unbelievable clarity. It's a difference you can see.



## FEATURES

- Increased light transmission for awe-inspiring colors and sharp details
- Blocks up to 99% of UV rays (300-380 nm)
- Anti-static properties repel dust on the viewing side, so there is less cleaning required
- Exceptional abrasion-resistance means the surface and brilliant colors stay true with frequent cleaning, and in high traffic areas or public spaces
- Shatter resistance safeguards against injury and damage to work
- Viewing side cleans like glass - easy to clean with common household glass cleaners. No special acrylic cleaners needed.
- Proprietary coating is engineered for permanence
- American Disabilities Act (ADA) compliant
- Second Surface Options: **Digital** - provides optimal adhesion of UV curing inks without adhesion promoters  
**Standard** - provides an uncoated surface for face mounting

## RECOMMENDED APPLICATIONS

- Face/Second Surface Mounting
- Direct Printing of Fine Art Photographs and Digital Images
- Signage - Exhibit & Wayfinding
- Branding, Corporate Images
- Wall Decor for Hospitality & Corporate Environments
- Point-of-Purchase & Retail Displays
- Customizable Dry Erase Marker Boards

THICKNESS	MAXIMUM SIZE (IN)	(MM)
3.0mm	60 x 120 in.	1524 x 3048mm
6.0mm	48 x 96 in.	1219 x 2438mm

Available thru Tru Vue Fine Art Distributors [tru-vue.com/find-a-distributor/](http://tru-vue.com/find-a-distributor/)  
Can be ordered cut-to-size  
To download Facts and Specifications go to [tru-vue.com/museums-collections/samples-literature/](http://tru-vue.com/museums-collections/samples-literature/)

## MEETS/EXCEEDS INDUSTRY STANDARDS

- Oddy Test - Passed
- Photographic Activity Test (ISO 18916) - Passed
- Corrosion Resistance (ASTM B117-03) - Passed

# TRU VUE® ACRYLIC AND GLASS SOLUTIONS

		ANTI-REFLECTIVE	ANTI-STATIC	ABRASION RESISTANT	99% UV PROTECTION	LIGHTWEIGHT	LIGHT TRANSMISSION	SHATTER RESISTANT	CRYSTAL CLEAR TRANSMITTED COLOR	MATTE-LIKE, NON-GLARE FINISH
RECOMMENDED FOR MUSEUM & FINE ART COLLECTIONS (99% UV Protection & shatter resistant)	Optium Museum Acrylic®	◆	◆	◆	◆	◆	>98	◆	◆	
	UltraVue® Laminated Glass	◆		◆	◆		>98	◆	◆	
CONSERVATION GRADE UV ACRYLIC	Conservation Clear® Acrylic				◆	◆		◆	◆	
	Conservation Reflection Control® Acrylic				◆	◆		◆	◆	◆
CONSERVATION GRADE UV GLASS	Museum Glass®	◆			◆		>97			
	Conservation Clear® Glass				◆					
	Conservation Reflection Control® Glass				◆					◆
SPECIALTY GLAZING	Optium Acrylic®	◆	◆	◆		◆	>98	◆	◆	
	UltraVue® Glass	◆		◆			>98.5			
	AR Reflection-Free® Glass	◆		◆			>97			
	Reflection Control® Glass									◆
	Reflection Control® Acrylic					◆		◆		◆
FACEMOUNTING, SIGNAGE & DIRECT PRINT	TruLife® Acrylic	◆	◆	◆	◆	◆	>98	◆	◆	

## TRU VUE® RESOURCES

**CLEANING:** [tru-vue.com/products/care-handling/](http://tru-vue.com/products/care-handling/)

**CASE FABRICATION GUIDELINES:** [tru-vue.com/2012/07/case-fabrication-guidelines/](http://tru-vue.com/2012/07/case-fabrication-guidelines/)

**QUICKVUE NEWSLETTERS / CASE STUDIES:** [tru-vue.com/articles/museums-collectors/](http://tru-vue.com/articles/museums-collectors/)

**FIND A DISTRIBUTOR:** [tru-vue.com/find-a-distributor/](http://tru-vue.com/find-a-distributor/)

Questions? Email us at [fineart@tru-vue.com](mailto:fineart@tru-vue.com)