



Photograph by
Holly Metz.

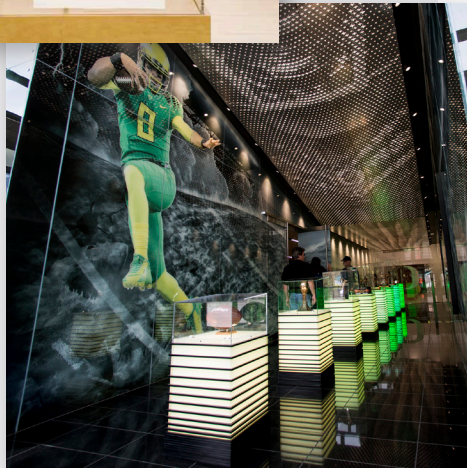


Photo credit: Kris Iverson, Moon Shadow Glass.



Mr. Morgan's Library (East Room). After restoration.
The Morgan Library & Museum, New York, USA.
Photography by Graham Haber, 2010.

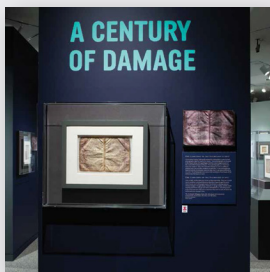


Photo © The Walters Art Museum,
Baltimore, MD, USA.

RANGE OF ANTI-REFLECTIVE ACRYLIC AND GLASS SOLUTIONS

For Protection & Display of Priceless Cultural
Heritage and Fine Art Collections

APPLICATIONS INCLUDE:

VITRINES • GLASS DISPLAY CASES • CABINET DOORS
WALL NICHES • BOX FRAMES • STAND-OFFS
EXHIBIT SIGNAGE • TRADITIONAL FRAMING

- Anti-reflective for an optimal viewing experience
- Blocks up to 99% of UV rays
- Crystal clear color and light transmission for vibrant colors, incredible depth, and clarity
- Shatter resistance safeguards against injury and damage
- Designed to meet tighter specifications for framing and display than glass made to architectural specifications
- Enhanced surface for better durability and easy cleaning; Abrasion resistant coating prevents marring during cleaning and keeps the surface looking great
- Anti-static properties on acrylic significantly cut down on cleaning and fabrication time, especially for high volume work
- Proprietary coating is engineered for permanence
- Available in sizes up to 0.25 in. (6.4mm) thick, 72 in x 120 in. (3050 mm x 1830 mm)

TRUSTED ACRYLIC & GLASS SOLUTIONS FOR OVER 45 YEARS



ANTI-REFLECTIVE | ABRASION RESISTANT | CONSERVATION GRADE UV PROTECTION | COLOR NEUTRAL | SAFETY & SECURITY



Courtesy, Winterthur Museum, With Cunning Needle Exhibition, photo by Jim Schneck. Embroidered bedcover, worked by Katurah Strong Reeve and daughter Katurah Reeve Van Duzer, Newburgh, NY, USA; 1820, Cotton. 1966.139, Gift of Mr. and Mrs. David Stockwell. Summer uniform of an enlisted sailor, worn by Warren Opie, Burlington, NJ, USA; 1850-54, Linen, silk, wool. 1967.933a,b, Bequest of Henry Francis du Pont. Sea bag, owned by Warren Opie, Burlington, NJ, USA; 1850-54, Linen, silk, wool, cotton. 1967.932, Bequest of Henry Francis du Pont.

Optium Museum Acrylic®

SUGGESTED APPLICATIONS

- Framing or display cases for cultural heritage and fine art collections
- 99% UV protection for light sensitive objects
- Security, for when glass breakage is a concern
- Works that travel or are displayed in high traffic areas and public event spaces
- Structurally sensitive frames and/or when glass is too heavy
- Anti-static friable media (pastels, charcoal, diamond dust), fragile surfaces (burnt paper), lightweight papers, textiles, featherwork and other static sensitive media



TruLife® Anti-Reflective Acrylic

for Face / Second Surface Mounting, Signage, and Print Applications

SUGGESTED APPLICATIONS

- For vibrant colors, depth and clarity
- Direct printing of fine art photographs and digital images
- Exhibit signage
- Branding and artistic installations



Photo courtesy Groeningemuseum.

UltraVue® Laminated Glass

SUGGESTED APPLICATIONS

- Framing or display cases for cultural heritage and fine art collections
- Security - if glass breaks, designed for shards to remain in place to safeguard the object until the glass is replaced
- 99% UV protection for light sensitive objects
- When rigidity and strength are required and weight is not a concern
- When permeability of display materials is a concern
- For enclosures (display cases and sealed packages) that will be used for long periods
- For parchment, albumin, panel paintings, and other media sensitive to fluctuations in relative humidity

Readily available through our worldwide network of authorized distributors.
For samples or questions, visit tru-vue.com/museums-collections or contact fineart@tru-vue.com.